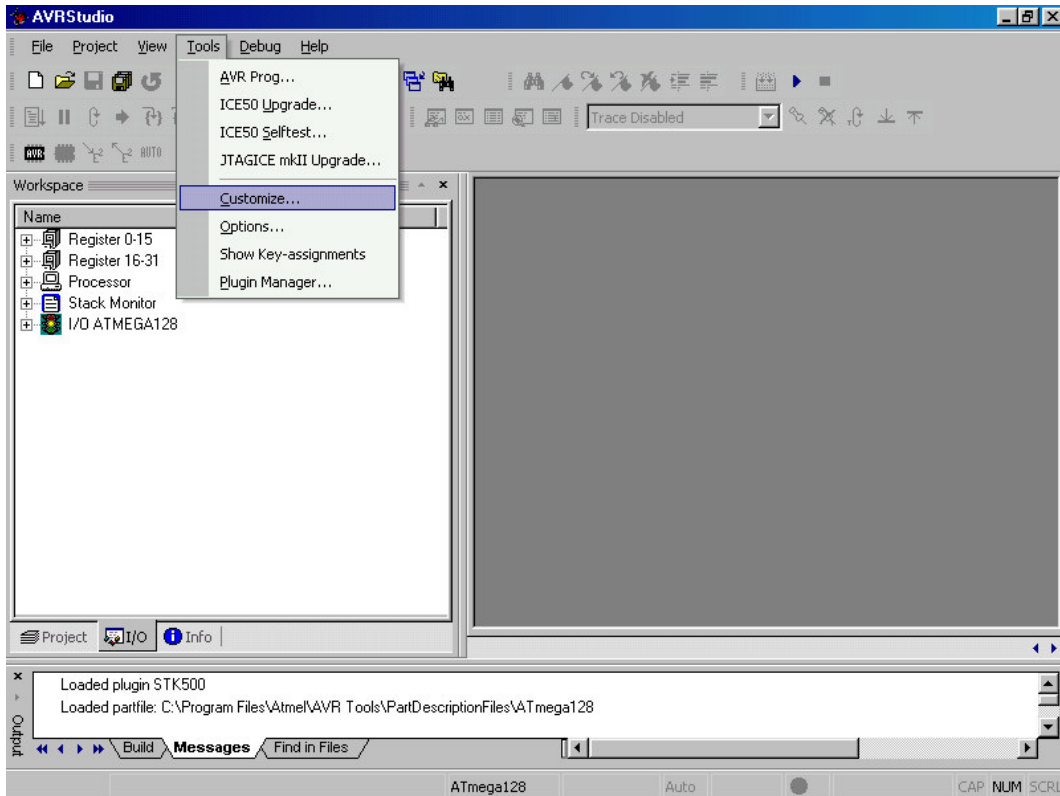
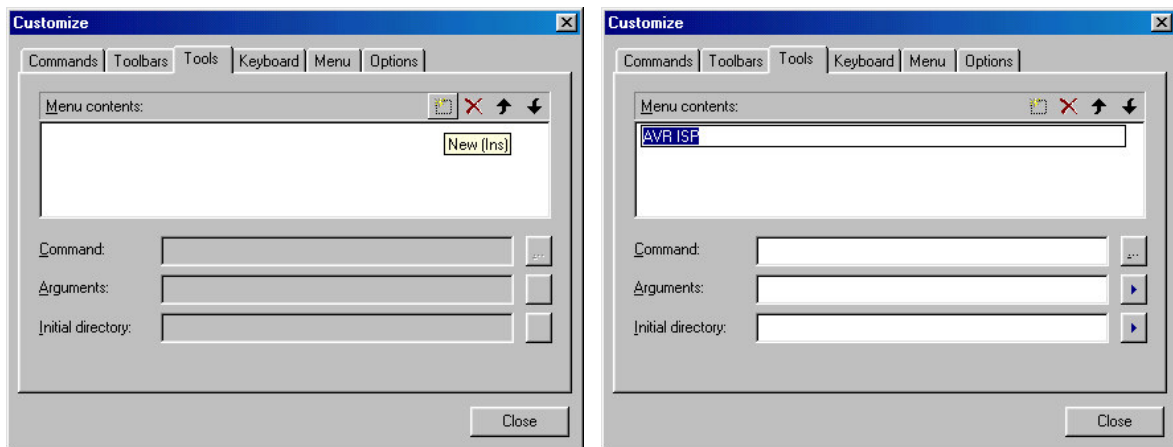


ADDING KANDA TOOLS to AVR STUDIO v4.10

- 1) Select “Customize” from the tool menu.

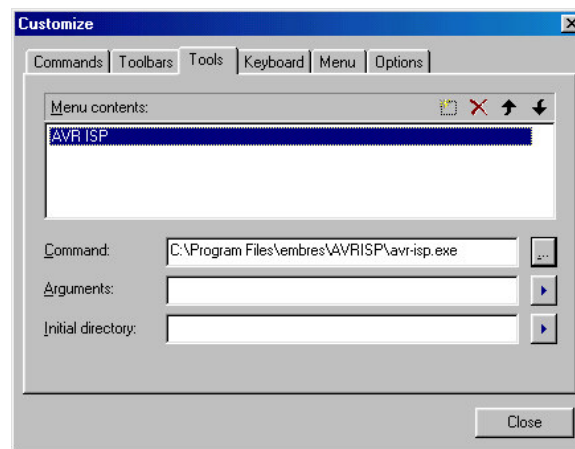


- 2) Select the tools tab.
- 2) Click the “new” Icon and enter the name of the tool to add.
Eg AVR ISP



3) Click on the “Command:” box and enter the path to the tool To be added, eg avr-isp.exe This is normally:

C:\ProgramFiles\embres\AVRISP\avr-isp.exe



5) Click close

6) The tool can now be selected directly from the tools menu

